



SM – 105

Section 4

Parts List



Parts list Contents

General	Page
System identification and accessories	4.4
Jointing unit assembly	4.9
Jointing head assembly	4.13
Hydraulic ram assembly	4.21
Pump unit assembly	4.23
Solenoid valve assembly	4.29
Pressure switch assembly	4.31
Motor assembly	4.33
Control box assembly	4.37

Illustrations

Fig		Page
4.1	Jointing unit assembly	4.8
4.2	Jointing head assembly	4.11 / 4.12
4.3	Hydraulic ram assembly	4.19 / 4.20
4.4	Pump unit assembly	4.22
4.5	Solenoid valve assembly	4.27 / 4.28
4.6	Pressure switch assembly	4.30
4.7	Motor assembly	4.32
4.8	Control box assembly	4.35 / 4.36

- 1.0 The parts list provides a comprehensive breakdown of the machine from system level to piece parts, so that repairs considered economically feasible may be effected.
- 2.0 Each major component or assembly nomenclature is preceded by a single star, the items indented two stars are piece parts of the one star component preceding, and three star items are piece parts of the two star component preceding
- 3.0 The Fig and Item No column indicates the number allocated to the component on the relevant illustration; this number is used consistently throughout the publication. A dash (-) in the column indicates that the item has not been shown or called-out on the illustration.
- 4.0 A Usage Code letter is allocated to each Telecrimp System listed and is repeated throughout the lists against each assembly that has a particular system application. Where no code letter is employed the relevant part or assembly is common to all systems.



System identification and accessories

Fig No	Part No	Nomenclature 1 2 3 4 5 6 7	Usage code	Units per assembly
-1	558/1/04220/000	MK3 telephone cable jointing system TC19 & TC20, 15ft hose and accessories, 24VDC	A	RF
-2	558/1/04220/001	MK3 telephone cable jointing system TC19, 15ft hose and accessories, 24VDC	B	RF
-3	558/1/04220/002	MK3 telephone cable jointing system TC20, 15ft hose and accessories, 24VDC	C	RF
-4	558/1/042220/003	MK3 telephone cable jointing system TC19 & TC20, 7ft hose and accessories, 24VDC	D	RF
-5	558/1/04220/004	MK3 telephone cable jointing system TC19, 7ft hose and accessories, 24VDC	E	RF
-6	558/1/04220/005	MK3 telephone cable jointing system TC20, 7ft hose and accessories, 24VDC	F	RF
-7	558/1/04221/000	MK3 telephone cable jointing system TC19 & TC20, 15ft hose and accessories, 110VAC	G	RF
-8	558/1/04221/001	MK3 telephone cable jointing system TC19, 15ft hose and accessories, 110VAC	H	RF
-9	558/1/04221/002	MK3 telephone cable jointing system TC20, 15ft hose and accessories, 110VDC	J	RF
-10	558/1/04221/003	MK3 telephone cable jointing system TC19 & TC20, 7ft hose and accessories, 110VAC	K	RF
-11	558/1/04221/004	MK3 telephone cable jointing system TC19, 7ft hose and accessories, 110VAC	L	RF
-12	558/1/04221/005	MK3 telephone cable jointing system TC20, 7ft hose and accessories, 110VAC	M	RF



Fig No	Part No	Nomenclature 1 2 3 4 5 6 7	Usage code	Units per assembly
-13	558/1/04225/000	* Jointing system assembly TC19 & TC20 15ft hose, 24VDC	A	1
-14	558/1/04225/001	*Jointing system assembly TC19 15ft hose, 24VDC	B	1
-15	558/1/04225/002	*Jointing system assembly TC20 15ft hose, 24VDC	C	1
-16	558/1/04225/003	*Jointing system assembly TC19 & TC20 7ft hose, 24VDC	D	1
-17	558/1/04225/004	*Jointing system assembly TC19 7ft hose, 24VDC	E	1
-18	558/1/04225/005	*Jointing system assembly TC20 7ft hose, 24VDC	F	1
-19	558/1/04226/000	*Jointing system assembly TC19 & TC20 15ft hose, 110VAC	G	1
-20	558/1/04226/001	*Jointing system assembly TC19 15ft hose, 110VAC	H	1
-21	558/1/04226/002	*Jointing system assembly TC20 15ft hose, 110VAC	J	1
-22	558/1/04226/003	*Jointing system assembly TC19 & TC20 7ft hose, 110VAC	K	1
-23	558/1/04226/004	*Jointing system assembly TC19 7ft hose, 110VAC	L	1
-24	558/1/04226/005	*Jointing system assembly TC20 7ft hose, 110VAC	M	1
-25	558/1/04227/000	**Jointing unit assembly TC19 & TC20 15ft hose, 24VAC (for breakdown see fig 4.1)	A	1
-26	558/1/04227/001	**Jointing unit assembly TC19 15ft hose, 24VC (for breakdown see fig 4.1)	B	1
-27	558/1/04227/002	**Jointing unit assembly TC20 15ft hose, 24VC (for breakdown see fig 4.1)	C	1
-28	558/1/04227/003	** Jointing unit assembly TC19 & TC20 7ft hose, 24VC (for breakdown see fig 4.1)	D	1
Fig No	Part No	Nomenclature 1 2 3 4 5 6 7	Usage code	Units per assembly

-Items not illustrated



Power Supplies (UK) Ltd

Service Manual for the TELECRIMP® Mark 3 / 4

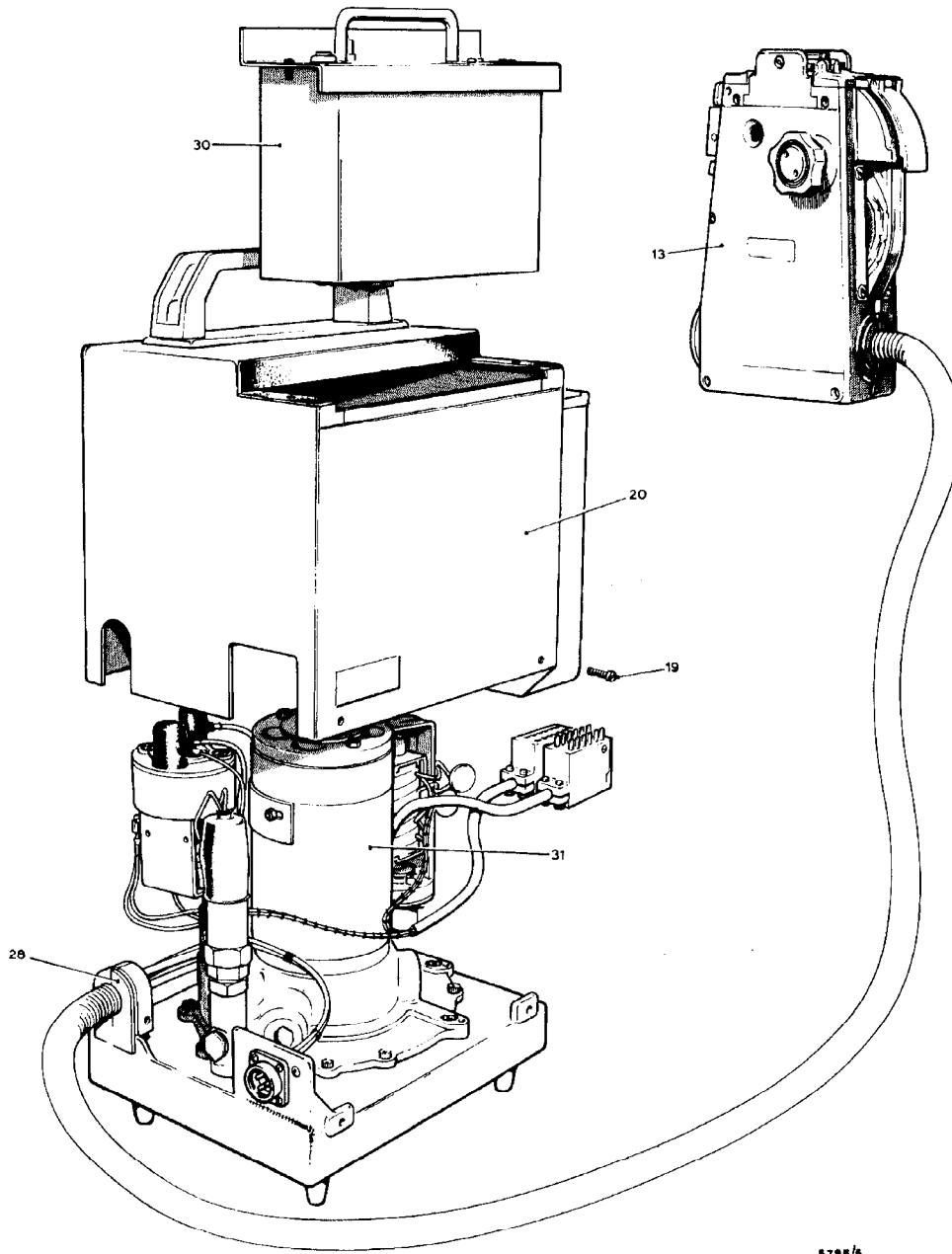
-29	558/1/04227/004	**Jointing unit assembly TC19 7ft hose, 24VC (for breakdown see fig 4.1)	E	1
-30	558/1/04227/005	**Jointing unit assembly TC20 7ft hose 24 volt DC (for breakdown see fig. 4.1)	F	1
-31	558/1/04228/000	**Jointing unit assembly TC19 & 20 15ft hose 110 volt AC (for breakdown see fig., 4.1)	G	1
-32	558/1/04228/001	** Jointing unit assembly TC19 15 ft. hose 110 volt AC (for breakdown see fig. 4.1)	H	1
-33	558/1/04228/002	** Jointing unit assembly TC20 15 ft. hose 110 volt AC (for breakdown see fig. 4.1)	J	1
-34	558/1/04228/003	**Jointing unit assembly TC19 & 20 7ft. hose 110 volt AC (for breakdown see fig. 4.1)	K	1
-35	558/1/04228/004	**Jointing unit assembly TC19 7ft. hose 110 volt AC (for breakdown see fig. 4.1)	L	1
-36	558/1/04228/005	** Jointing unit assembly TC20 7ft. hose 110 volt AC (for breakdown see fig. 4.1)	M	1
-37	558/2/04315/000	**Case, Transit		1
-38	705/1/07544/002	**Cable assembly, Power supply	A-F	1
-39	705/1/07634/001	**Cable assembly, Power supply	G-M	1
-40	705/4/07617/000	***Cap, Rubber "Harvey Hubbell" 5274	G-M	1
-41	705/4/07615/000	***Connector with cord grip "Harvey Hubbell" 7593	G-M	1
-42	705/4/07616/000	***Cover, sealtite "Harvey Hubbell" 7440	G-M	1
-43	508/2/07706/200	***Gasket, outlet	A-F	1
-44	508/2/04851/002	***Nut, outlet extended	A-F	1
-45	705/4/07607/000	***Boot, thermofit, right angle "Raychem Ltd" 222A052-3	A-F	1
-46		***Sleeve, "Hellermann" Type SRT 2mm bore x 0.5 in. LG. Pink	A-F	2
Fig No	Part No	Nomenclature	Usage code	Units per assembly
-47		***Sleeve, "Hellermann" Type SRT	A-F	1

-Items not illustrated



-48	508/1/40205/520	2mm bore x 0.5 in. LG. Yellow ***Socket , free MK.4 brass 3 way 19A	A-F	1
-49	558/4/04280/000	**Items for copper billet test		AR
-50	558/2/02245/000	***Billet, copper		AR
-51	558/2/02246/001	***Support, billet		AR
-52	558/2/02248/002	***Gauge, test		1
-53	558/1/04301/000	**Kit assembly, tool		1
-54	558/2/04265/000	***Cutter, blade		1
-55	558/2/04264/000	***Cutter, blade reverse		1
-56	558/4/04166/000	***Brush, cleaning		1
-57	558/4/04165/000	***Wallet		1
-58	558/4/04152/000	***Tweezers, flat $\frac{1}{8}$ in. wide		1
-59	558/2/04118/000	***Spanner		1
-60	558/7/04117/004	***Wrench, hexagon 5mm A/F		1
-61	558/7/04117/002	***Wrench, hexagon 3/32 in. A/F		1
-62	558/7/04117/001	***Wrench, hexagon 5/64 in. A/F		1
-63	558/7/04117/005	***Wrench, hexagon 1/16 in. A/F		1
-64	558/7/04117/000	***Wrench, hexagon 0.05 in. A/F		1
-65	558/1/02319/001	*Equipment, Canvas Bag (filled)		1
-66	558/7/03905/000	**Case, transit		1
-67	558/1/00957/000	**Carriage, indexing		1
-68	558/1/02219/000	***Mounting accessories		1
-69	558/1/02211/000	***Bearer extension		2
-70	558/1/02212/000	***Clamp assembly, bearer extension		2
-71	558/1/02209/000	***Hanger assembly		2
-72	558/1/02206/000	***Bracket assembly, hanger		2

Jointing Unit Assembly **Fig 4.1**



5705/5



Fig No	Part No	Jointing Unit Assembly (Fig 4.1)		Usage code	Units per assembly
		Nomenclature	1 2 3 4 5 6 7		
-1	558/1/04227/000	Jointing unit assembly TC19 & 20 15ft. hose 24 volt DC		A	RF
-2	558/1/04227/001	Jointing unit assembly TC19 15ft. hose 24 volt DC		B	RF
-3	558/1/04227/002	Jointing unit assembly TC20 15ft. hose 24 volt DC		C	RF
-4	558/1/04227/003	Jointing unit assembly TC19 & 20 7ft. hose 24 volt DC		D	RF
-5	558/1/04227/004	Jointing unit assembly TC19 7ft. hose 24 volt DC		E	RF
-6	558/1/04227/005	Jointing unit assembly TC20 7ft. hose 24 volt DC		F	RF
-7	558/1/04228/000	Jointing unit assembly TC19 & 20 15ft. hose 110 volt AC		G	RF
-8	558/1/04228/001	Jointing unit assembly TC19 15ft. hose 110 volt AC		H	RF
-9	558/1/04228/002	Jointing unit assembly TC20 15ft. hose 110 volt AC		J	RF
-10	558/1/04228/003	Jointing unit assembly TC19 & 20 7ft. hose 110 volt AC		K	RF
-11	558/1/04228/004	Jointing unit assembly TC19 7ft. hose 110 volt AC		L	RF
-12	558/1/04228/005	Jointing unit assembly TC20 7ft. hose 110 volt AC		M	RF
13	558/1/04223/000	*Jointing head assembly TC19 & 20 15ft. hose (for breakdown see fig. 4.2)		AG	1
-14	558/1/04223/001	*Jointing head assembly TC19 15ft. hose (for breakdown see fig. 4.2)		BH	1
-15	558/1/04223/002	*Jointing head assembly TC20 15ft. hose (for breakdown see fig. 4.2)		CJ	1
-16	558/1/04223/003	*Jointing head assembly TC19 & 20 7ft. hose (for breakdown see fig. 4.2)		DK	1
-17	558/1/04223/004	*Jointing head assembly TC19 7ft. hose (for breakdown see fig. 4.2)		EL	1

-Items not illustrated



Power Supplies (UK) Ltd

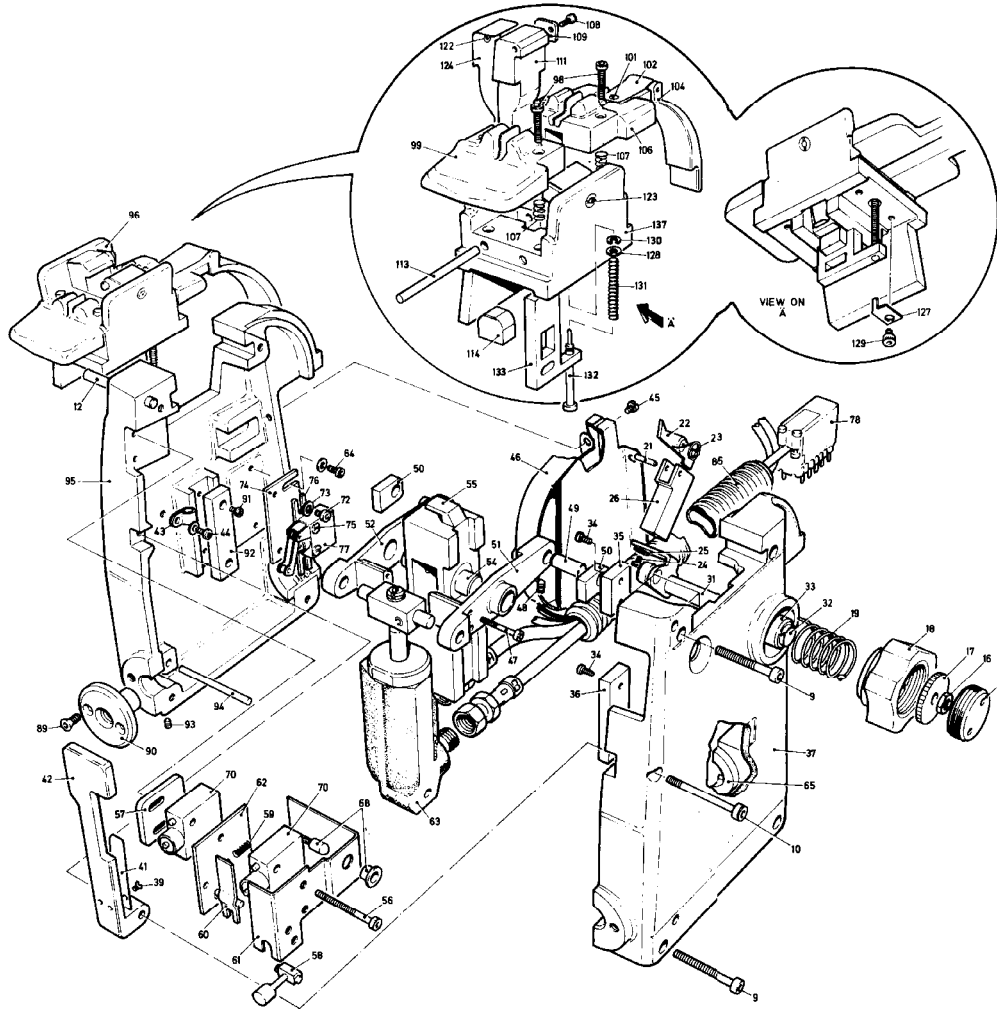
Service Manual for the TELECRIMP® Mark 3 / 4

Fig No	Part No	Nomenclature 1 2 3 4 5 6 7	Usage code	Units per assembly
-18	558/1/04223/005	*Jointing head assembly TC20 7ft. hose (for breakdown see fig. 4.2)	FM	1
19	991/4/01515/026	*Screw, pan head. Recessed att. case BS4183 brass, cad plate & pass M5 x 10mm LG		4
20	705/1/07600/000	*Case assembly		1
-21		**Beading, rubber type 1081 "Waterford Rubber Mfg. Co."		AR
-22	705/2/07497/000	**Gasket		1
-23	999/4/00197/003	**Screw, skt. hd. cap, att. handle "Unbrako Ltd" stl. blued 2BA x 0.5 in. LG		2
-24	552/2/01868/000	**Handle		1
-25	558/2/03906/000	**Liner, rubber		1
-26	558/2/03908/000	**Pad		1
-27	558/2/03907/000	**Support, pad		1
28	705/1/07270/000	*Clamp assembly, convoluted tube		1
-29	999/4/00197/006	**Screw. skt. hd. cap "Unbrako Ltd" stl. blued 2BA x 0.875 in. LG		2
30	558/1/04107/000	*Control box assembly (for breakdown see fig. 4.8)		1
31	558/1/04106/000	*Pump assembly, wired, MK3, 24 volt (for breakdown see fig. 4.4)	A-F	1
-32	558/1/04130/000	*Pump assembly, wired, MK3, 110 volt (for breakdown see fig. 4.4)	G-M	1
-33	558/4/02324/000	*Label, "Warning"		1
-34	558/4/04281/000	*Label "Part No."	A-F	1
-35	558/4/04282/000	*Label "Part No."	G-M	1
-36	705/4/07205/000	*Label "Voltage"	A-F	1
-37	705/4/07611/000	*Label "Voltage"	G-M	1
-38	558/2/02362/000	*Cover, Dust		1

-Items not illustrated



Joining Head Assembly
(Fig. 4.2)



-Items not illustrated



Jointing Head Assembly (Fig. 4.2)

Fig No	Part No	Nomenclature							Usage code	Units per assembly
		1	2	3	4	5	6	7		
-1	558/1/04223/000	Jointing head assembly TC19 & 20 15ft. hose							AG	RF
-2	558/1/04223/001	Jointing head assembly TC19 15ft. hose							BH	RF
-3	558/1/04223/002	Jointing head assembly TC20 15ft. hose							CJ	RF
-4	558/1/04223/003	Jointing head assembly TC19 & TC20 7ft. hose							DK	RF
-5	558/1/04223/004	Jointing head assembly TC19 7ft. hose							EL	RF
-6	558/1/04223/005	Jointing head assembly TC20 7ft. hose							FM	RF
-7	558/1/04224/000	*Head assembly, drive unit 15ft. hose							ABCGHJ	1
-8	558/1/04224/001	*Head assembly, drive unit 7ft. hose							DEFKLM	1
9	999/4/01031/085	**Screw, hex. Skt. cap. Att. body halves "UNBRAKO LTD" st. stl. 4BA X 1.25". LG.								4
10	558/2/02339/001	**Screw, special								1
-11	558/4/04314/000	**Screw, special								1
12	999/4/02225/065	**Pin, dowel "BONEHAM & TURNER" st. stl. 0.187". dia X 1.625". LG.								1
-13	558/4/04279/000	**Label								1
-14	558/1/04231/000	**Body half assembly, front								RF
15	558/2/04146/000	***Disc, retaining								1
16	991/4/00449/007	***Nut, thin BS57 stl. cad. plate & pass 2BA								1
17	558/2/04145/000	***Collar, drive								1
18	558/1/04123/000	***Knob assembly, feed operating								1
19	558/4/02134/000	***Spring, torsion								1
-20	558/1/04235/000	***Arm assembly, feed operating								1



Fig No	Part No	Nomenclature							Usage code	Units per assembly
		1	2	3	4	5	6	7		
21	999/4/02225/013	****Dowel, "BONEHAM & TURNER"								1
		st. stl. 0.094" dia X 0.375" in. LG.								
22	558/1/04174/000	****Pawl assembly, feed								1
23	558/4/02234/000	****Spring, feed pawl								1
24	999/4/00197/051	****Screw, hex. Skt. cap. Att. feed arm								2
		"UNBRAKO LTD" stl. blue/black 6BA								
		X 0.187 in. LG.								
25	999/4/00852/006	****Washer, shake proof, int. teeth								2
		"BARBER & COLEMAN" type 1204								
		high carbon stl. 6BA								
26	558/2/04269/000	****Arm feed								1
-27	999/4/00743/014	****Screw, hex. Skt. csk. Att. spindle								1
		"GKN SCREWS & FASTENERS" stl.								
		blue/black 4BA X 0.32 in. LG.								
-28	558/2/02126/000	****Bearing								1
29	558/2/02102/000	****Roller								1
-30	558/2/02103/000	****Spindle								1
31	558/1/04240/000	****Arm assembly, feed operating								1
32	558/4/04119/000	***Bearing, feed arm								1
33	558/2/04249/000	***Sleeve, mounting								1
34	999/4/00197/055	***Screw, hex. Skt. cap. Att. guide								4
		strips "UNBRAKO LTD" stl. blue/black								
		6BA X 0.32 in. LG.								
35	558/2/04250/000	***Strip, guide top								1
36	558/2/04287/000	***Strip, guide bottom								1
37	558/2/04246/000	***Body, half front								1
-38	558/1/04234/000	**Lever assembly, operating								1
39	991/4/00062/016	***Screw, csk. Hd. (A33Z4)								2
-40	999/4/00714/093	***Screw, hex. Skt. set ½ dog type								1
		"UNBRAKO LTD" stl. blue/black 6BA								
		X 0.375 in. LG.								
41	558/2/04299/000	***Spring, operating lever								1



Power Supplies (UK) Ltd

Service Manual for the TELECRIMP® Mark 3 / 4

Fig No	Part No	Nomenclature	Usage code	Units per assembly
		1 2 3 4 5 6 7		
42	558/2/04313/000	***Lever		RF
43	999/4/00197/051	**Screw, hex. Skt. cap. Att. cable clips "UNBRAKO LTD" stl. blue/black 6BA X 0.187 in. LG		2
44	999/4/00427/002	**Clip, cable type X1 "INSULOID MFG. CO. LTD."		2
45	558/4/04317/000	**Screw, special att. cassette guide		4
46	558/1/04243/000	**Guide assembly, cassette		1
47	999/4/00197/029	**Screw, hex. Skt. cap. Att. lifting levers "UNBRAKO LTD" stl. blue/black 6BA X 0.75 in. LG.		2
48	999/4/00714/013	**Screw, hex. Skt. set. Att. pivot pins "UNBRAKO LTD" stl. blue/black 4BA X 0.187 in. LG.		2
49	558/2/02124/000	**Pin, pivot, lifting levers		2
50	558/2/02089/000	**Block, slide		2
51	558/2/02091/000	**Lever, ram lifting, front		1
52	558/2/02090/000	**Lever, ram lifting, rear		1
-53	558/1/04232/000	**Slide assembly, main		1
54	558/2/02121/000	***Stud, screwed		2
55	558/2/04267/000	***Slide, main		1
56	999/4/00197/043	**Screw, hex. Skt. cap. Att. switch plates "UNBRAKO LTD" stl. blue/black 6BA X 1 in. LG.		2
57	558/2/04202/000	**Plate, operating, lever stop		1
58	558/1/04300/000	**Actuator, assembly, ON-OFF switch		1
59	558/4/04298/000	**Spring, ON-OFF switch		1
60	558/1/04244/000	**Lever assembly, ON-OFF switch		1
61	558/2/04293/000	**Plate, ON-OFF switch, front		1
62	558/2/04294/000	**Plate, ON-OFF switch, rear		1

-Items not illustrated



Power Supplies (UK) Ltd

Service Manual for the TELECRIMP® Mark 3 / 4

Fig No	Part No	Nomenclature 1 2 3 4 5 6 7	Usage code	Units per assembly
63	552/1/02233/000	**Ram assembly, hydraulic (refer fig. 4.3)		1
64	999/4/00197/025	**Screw, hex. Skt. cap. Att. lower switch "UNBRAKO LTD" stl. blue/black 6BA X 0.25 in. LG.		2
65	558/2/04278/000	**Clamp, convoluted tube		2
-66	558/1/04233/000	**Hose and cable assembly 15ft. hose	ABCGHJ	1
-67	558/1/04233/001	**Hose and cable assembly 7ft. hose	DEFKLM	1
68	520/1/97363/000	***Diode, light emitting		1
-69	558/4/04135/000	***Resistor, 2K2 "Radio Spares"		1
70	NEW NUMBER	***Switch, micro		2
-71	558/1/04241/000	***Switch assembly, micro lower		RF
72	999/4/00197/051	****Screw, hex. Skt. cap. "UNBRAKO LTD" stl. blue/black 6BA X 0.187 in. LG.		2
73	999/4/00852/006	****Washer, shake proof 6BA "BARBER & COLEMAN" type 1204 high carbon stl.		2
74	558/2/04276/000	****Plate, limit switch, upper		1
75	991/4/00243/059	****Screw, CH.HD BS57 stl. cad. plate & pass. 6BA X 0.375 in. LG.		2
76	558/2/04277/000	****Plate, limit switch, lower		1
77	NEW NUMBER	****Switch, micro		1
78	74/10/1101/10	***Plug, 11 way with cover painton series 159		1
-79	558/1/04242/000	***Marker set		1
-80		***Sleeve, yellow, "HELLERMANN" type 2 srt 5mm bore X 2in. LG.		1
-81		***Sleeve, yellow, "HELLERMANN" type 3 PVC 8mm bore X 9in. LG.		1
-82		***Sleeve, black, "HELLERMANN" type 2 srt 5mm bore X 16in. LG.		1

-Items not illustrated



Power Supplies (UK) Ltd

Service Manual for the TELECRIMP® Mark 3 / 4

Fig No	Part No	Nomenclature							Usage code	Units per assembly
		1	2	3	4	5	6	7		
-83		***	Wire, equip. Type 1	7-0.2mm X 14 in. LG. yellow, def stan 61-12 part 6						1
-84		***	Wire, equip. Type 2	7-0.2mm X 2in.LG. yellow, def stan 61-12 part 6						2
85	558/4/04275/000	***	Tube, power flexible					ABCGHJ		1
-86	558/4/04275/001	***	Tube, power flexible					DEFKLM		1
-87	558/1/04318/000	**	Label							1
-88	558/1/04230/000	**	Body, half assembly, rear							RF
89	558/4/04314/000	***	Screw, special, att. mtg. Flange							1
90	558/2/04247/000	***	Flange, mounting							1
91	999/4/00197/055	***	Screw, hex. Skt. cap. Att. guide strip "UNBRAKO LTD" stl. blue/black 6BA X 0.312 in. LG.							2
92	558/2/04287/000	***	Strip, guide							1
93	999/4/00714/013	***	Screw, hex. Skt. set. Att. pivot pin "UNBRAKO LTD" stl. blued 4BA X 0.187 in. LG.							1
94	558/2/04248/000	***	Pin. Pivot, I.H.D. ram							1
95	558/2/04245/000	***	Body, half, rear							1
96	558/1/04229/019	*	Housing assembly, slide in jaw, TC19					BEHL		1
-97	558/1/04229/020	*	Housing assembly, slide in jaw, TC20					ACDFGJK M		1
98	999/4/02618/026	**	Screw, hex. Skt. cap. Att. location blocks, L.H. & R.H. "GKN SCREWS & FASTENERS" st. stl. 4BA X 0.625 in. LG.							4
99	558/2/04283/000	**	Block, wire location, L.H.							1
-100	558/1/04239/000	**	Block assembly, wire location, R.H.							RF
101	999/4/02750/015	***	Screw, Pan.HD. slotted att.cover spring "GKN SCREWS & FASTENERS" brass chrome plated 6BA X 0.125 in. LG.							1

-Items not illustrated



Power Supplies (UK) Ltd

Service Manual for the TELECRIMP® Mark 3 / 4

Fig No	Part No	Nomenclature							Usage code	Units per assembly
		1	2	3	4	5	6	7		
102	558/4/02141/000	***Spring, cover								1
-103	999/4/00880/175	***Pin,, Spirol "SPIROL INDUSTRIES" carbon stl. med. Duty, oiled 0.062 in. dia. X 0.75in. LG.								1
104	558/2/04262/000	***Cover, hinged								1
-105	558/4/04205/001	***Spring, restraining								1
106	558/2/04284/000	***Block, location, R.H.								1
107	558/4/04263/000	**Spring, wire guides								4
108	999/4/02618/005	**Screw, hex. Skt. cap. Att. cutter blades "GKN SCREWS & FASTENERS" st.stl. 6BA X 0.25in. LG.								2
109	558/2/04265/000	**Blade, cutter								2
-110	999/4/00880/175	**Pin, spirol "SPIROL INDUSTRIES" carbon stl. med. Duty, oiled 0.062in. dia X 0.75in. LG.								2
-111	558/2/04255/019	**Jaw, fold-over							BEHL	2
112	558/2/04255/020	**Jaw, fold-over							ACDFGJK M	2
113	999/4/02225/066	**Pin, dowel "BONEHAM & TURNER" st.stl. 0.187in. dia. X 1.75in. LG.								2
114	558/2/04266/000	**Cam - select on assembly								1AR
-115	558/2/04266/001	**Cam - select on assembly								1AR
-116	558/2/04266/002	**Cam - select on assembly								1AR
-117	558/2/04266/003	**Cam - select on assembly								1AR
-118	558/2/04266/004	**Cam - select on assembly								1AR
-119	558/2/04266/005	**Cam - select on assembly								1AR
-120	558/2/04266/006	**Cam - select on assembly								1AR
-121	558/2/04266/007	**Cam - select on assembly								1AR
122	999/4/00743/025	**Screw, hex. Skt. cap "GKN SCREWS & FASTENERS" stl. blue/black 6BA X 0.25in. LG.								2

-Items not illustrated



Fig No	Part No	Nomenclature							Usage code	Units per assembly
		1	2	3	4	5	6	7		
123	558/2/04257/000	**Nut, spring retaining								2
124	558/4/04258/000	**Spring, jaw return								2
125	558/1/04238/019	**Ram assembly, TC19							BEHL	1
-126	558/1/04238/020	**Ram assembly, TC20							ACDFGJK M	1
127	558/2/04327/000	**Bracket, ram retaining								1
128	558/2/04326/000	**Washer								1
129	991/4/00294/032	**Screw, hex. Skt. cap, cup point BS2470 alloy steel blued 4BA X ¼ in.LG.								1
130	999/4/00431/045	***Circlip, spring retaining "ANDERTON" type 1500 series 72E								1
131	558/4/04261/000	***Spring, clip stop pin								1
132	558/2/04259/000	***Pin, clip stop								1
133	558/2/04260/019	***Ram, TC19							BEHL	1
-134	558/2/04260/020	***Ram, TC20							ACDFGJK M	1
-135	558/4/04312/019	**Label, TC19							BEHL	1
-136	558/4/04312/020	**Label, TC20							ACDFGJK M	1
137	558/2/04251/019	**Housing, jaw TC19							BEHL	1
-138	558/2/04251/020	**Housing, jaw TC20							ACDFGJK M	1



Hydraulic Ram Assembly (Fig. 4.3)

Fig No	Part No	Nomenclature 1 2 3 4 5 6 7	Usage code	Units per assembly RF
-1	552/1/02233/000	Hydraulic ram assembly		
2	999/4/01327/019	*Ball		1
3	552/2/02190/000	*Bearing		1
4	552/2/02234/000	*Body, ram		1
5	552/2/01725/000	*Bush, locking		1
-6	915/4/98130/007	*Cover, dust type AQ330-7 "SUPER OIL SEALS AND GASKETS LTD"		2
7	552/2/02187/000	*Nut, gland		1
8	552/2/02235/000	*Piston		1
-9	552/4/02167/000	*Screw, grub		1
10	999/4/00197/014	*Screw Skt, HD Cap 4ba x 3/8" Stl Blued "Umbrako Ltd"		
11	552/4/02195/000	*Seal assembly, co-axial		1
12	999/4/01996/006	*Seal, "O" ring		1
13	999/4/01609/001	*Seal, "O" ring		3
14	552/4/02194/000	*Sealing ring		1
15	552/4/02230/000	*Spring		1
16	552/2/02191/000	*Trunnion		1
17	552/2/02192/000	*Union		2
18	552/2/02189/000	*Valve, seat		1



Fig No	Part No	Pump Unit Assembly (Fig. 4.4)							Usage code	Units per assembly
		1	2	3	4	5	6	7		
-1	558/1/04106/000	Pump unit assembly, wired MK.3 24V							A-F	RF
-2	558/1/04130/000	Pump unit assembly, wired MK.3 110V							G-M	RF
-3	508/1/04117/005	*Cap, protective							A-F	1
4	705/1/07541/000	*Loom, control unit							A-F	1
-5	705/1/07551/000	*Loom, control unit							G-M	1
-6	705/4/07588/000	**Boot, faston type HV4819 "HELLERMANN LTD"							A-F	7
-7	705/4/07588/000	**Boot, faston type HV4819 "HELLERMANN LTD"							G-M	6
-8	705/1/07195/001	**Link assembly							A-F	1
-9	705/4/07590/000	***Tab, faston type 160313-2 "AIRCRAFT MARINE PRODUCTS"							A-F	1
-10	31907	***Tag, ring tongue size 16-14 "AIRCRAFT MARINE PRODUCTS"							A-F	1
-11	705/1/07642/000	**Marker set							A-F	1
-12	705/1/07644/000	**Marker set							G-M	1
13	705/4/07581/000	**Resistor, non linear, 845-01 "MORGANITE LTD"								3
-14	705/4/07643/000	**Tab, faston type 42452-1 "AIRCRAFT MARINE PRODUCTS"								2
-15	705/4/07608/000	**Tab, faston type 42599-2 "AIRCRAFT MARINE PRODUCTS"							A-F	1
-16	705/4/07590/000	**Tab, faston type 160313-2 "AIRCRAFT MARINE PRODUCTS"								6
-17	705/4/07598/000	**Tag, ring tongue type 22-16 "AIRCRAFT MARINE PRODUCTS" (31893)							A-F	1
18		**Socket, 11 way (74-10-1151-10) "PAINTON LTD"								1
19	991/4/00449/007	*Nut, thin 2BA BS57 stl. cad. plate and passivated							G-M	1



Power Supplies (UK) Ltd

Service Manual for the TELECRIMP® Mark 3 / 4

Fig No	Part No	Nomenclature 1 2 3 4 5 6 7	Usage code	Units per assembly
-20	991/4/00449/008	*Nut, thin 4BA BS57 stl. cad. plate and passivated	G-M	4
-21	705/1/07542/000	*Plug & cable assembly, input	A-F	1
-22	558/1/04157/000	*Plug & cable assembly, input	G-M	1
-23	705/4/07588/000	**Boot, faston "HELLERMANN" HV4819	A-F	1
-24	705/4/07488/000	**Boot, faston "HELLERMANN" HV4819	G-M	2
-25	705/4/07587/000	**Connector, in line, size 16-20 (34070) "AIRCRAFT MARINE PRODUCTS"	G-M	2
-26	705/4/07616/000	**Cover, sealtite type 7440 "HARVEY HUBBELL LTD"	G-M	1
-27	705/4/07619/000	**Inlet, type 7551 "HARVEY HUBBELL LTD"	G-M	1
-28	705/1/07195/002	**Link	G-M	1
-29	991/4/00454/010	**Nut, thin 8BA brass, cad plated	G-M	1
-30	508/1/40345/520	**Plug, fixed MK.4	A-F	1
-31	991/4/00257/081	**Screw, rd.hd. 8BA X ¼ brass, cad. plate & pass.	G-M	1
-32	705/4/07591/000	**Shroud, type KS126 "RIPAULTS LTD"	G-M	1
-33	705/4/07590/000	**Tab, faston type 160313-2 "AIRCRAFT MARINE PRODUCTS"	G-M	1
-34	705/4/07608/000	**Tab, faston type 42599-2 "AIRCRAFT MARINE PRODUCTS"	G-M	1
-35	705/4/07637/000	**Tag, ring tongue (31901) "AIRCRAFT MARINE PRODUCTS"	G-M	3
-36	705/4/07636/000	**Tag, ring tongue (31903) "AIRCRAFT MARINE PRODUCTS"	G-M	1
-37	705/4/07598/000	**Tag, ring tongue (31893) "AIRCRAFT MARINE PRODUCTS"	G-M	1
-38	705/4/07589/000	**Tag, ring tongue (31907)		1
Fig No	Part No	Nomenclature 1 2 3 4 5 6 7	Usage code	Units per assembly

-Items not illustrated



Power Supplies (UK) Ltd

Service Manual for the TELECRIMP® Mark 3 / 4

-39	705/4/07618/000	*Plug, closure	G-M	1
-40	552/1/02173/000	*Pump unit	A-F	1
-41	552/1/02174/000	*Pump unit	G-M	1
42	552/4/01620/000	**Bearing, needle roller		1
43	552/1/02177/000	**Body, pump		1
44	552/4/01994/000	**Bracket, contactor		1
45	552/1/01965/000	**Cap assembly, filler		1
46	999/4/01996/006	***Seal, "O" ring		1
47	552/2/01841/000	**Cap, valve		3
48	552/4/01995/000	**Contactor		1
-49	999/4/00032/007	**Cover, dust		2
50	552/2/02175/000	**Cylinder		3
51	552/2/01837/000	**Eccentric		1
52	550/4/09361/000	**Filter, oil		1
53	999/4/00035/004	**Key		1
54	552/4/01956/000	**Motor assembly, 24V (C26707) "NELCO LTD" (for breakdown see fig. 4.7)	A-F	1
-55	552/4/02165/000	**Motor assembly, 110V (C26756) "NELCO LTD" (for breakdown see fig. 4.7)	G-M	1
56	991/4/01725/008	**Nut, hex. M5 stl. cad. plated & pass		14
57	991/4/01704/008	**Nut, hex. M8 stl. Raw		1
58	552/2/02176/000	**Piston, pump		3
-59	552/2/01981/000	**Plug, 7/16 unc		1
60	552/1/02100/000	**Pressure switch assembly, MK.III (for breakdown see fig. 4.6)		1
61	991/4/00242/011	**Screw, ch.hd. 2BA X 9.5 in. LG. BS57 stl. nat.		2
62	991/4/01522/196	**Screw, csk. Hd. M6 X 16		1
Fig No	Part No	Nomenclature	Usage code	Units per assembly
		1 2 3 4 5 6 7		
-63	991/4/01579/044	**Screw, hex. Hd. M5 X 10		1

-Items not illustrated



64	991/4/01579/067	**Screw, hex. Hd. M8 X 16	1
65	991/4/01500/149	**Screw, pan. Hd. M6 X 50	3
-66	991/4/00006/003	**Seal, bonded (AGS1186-3)	1
67	991/4/00006/006	**Seal, bonded (AGS1186-6)	1
68	991/4/00006/008	**Seal, bonded (AGS1186-A)	4
-69	991/4/00006/010	**Seal, bonded (AGS1186-9)	1
70	552/4/01851/000	**Seal, "O" ring, tank	1
71	999/4/00016-128	**Seal, "O" ring	3
72	552/4/02169/000	**Seal, "O" ring	1
73	999/4/01543/005	**Seal, "O" ring	3
74	552/4/02133/000	**Shroud, filter	1
75	552/4/02178/000	**Spring, piston	3
76	552/4/01865/000	**Spring, non return valve	3
77	552/1/02198/000	**Tank assembly	1
78	552/2/02135/000	***Plug, drain	1
79	999/4/01609/008	***Seal, "O" ring	1
80	552/2/02196/000	***Stud	12
81	552/2/01807/000	**Union, 1/8 BSP	2
-82	552/1/02172/000	**Valve assembly, relief	1
83	552/2/02182/000	***Adjuster, spring	1
84	999/4/01111/007	***Ball	1
85	552/2/02171/000	***Body	1
86	552/2/02170/000	***Carrier, ball	1
87	552/4/02183/000	***Spring	1
88	552/1/02518/000	**Valve assembly, solenoid (for breakdown see fig. 4.5)	1



Fig No	Part No	Nomenclature	Usage code	Units per assembly
		1 2 3 4 5 6 7		
89	552/2/02181/000	**Valve, non return		3
90	552/2/02137/000	**Washer		1
91	999/4/01349/019	**Washer		12
92	991/4/01679/012	**Washer		2
93	999/4/01349/025	**Washer		3
94	552/4/01873/000	**Washer, back up		3
95	552/2/02184/000	**Washer, plain		1
96	552/4/02134/000	**Washer, rubber		1
97	991/4/00093/006	**Washer, spring (SP47C)		2
98	705/4/07614/000	*Rectifier, silicon full wave	G-M	1
99	999/4/00507/027	*Screw, RCSD. Csk. Hd. 2BA X ¾ in. LG.	G-M	1
-100	999/4/00491/027	*Screw, RCSD. Csk. Hd. 4BA X ¾ in. LG.	G-M	1
101	991/4/01504/026	*Screw, RCSD. Csk. Hd. M5 X 10mm	G-M	2
-102	999/4/00493/024	*Screw, RCSD. Csk. Hd. 4BA X 3/8 in. LG.	G-M	2
103	407/8/40067/001	*Transformer	G-M	1
104	999/4/01349/019	*Washer, shake proof 2BA type 1210 "BARBER & COLEMAN LTD"	G-M	1
-105	999/4/01349/012	*Washer, shake proof 4BA type 1206 "BARBER AND COLEMAN LTD"	G-M	4



Solenoid Valve Assembly (fig. 4.5)

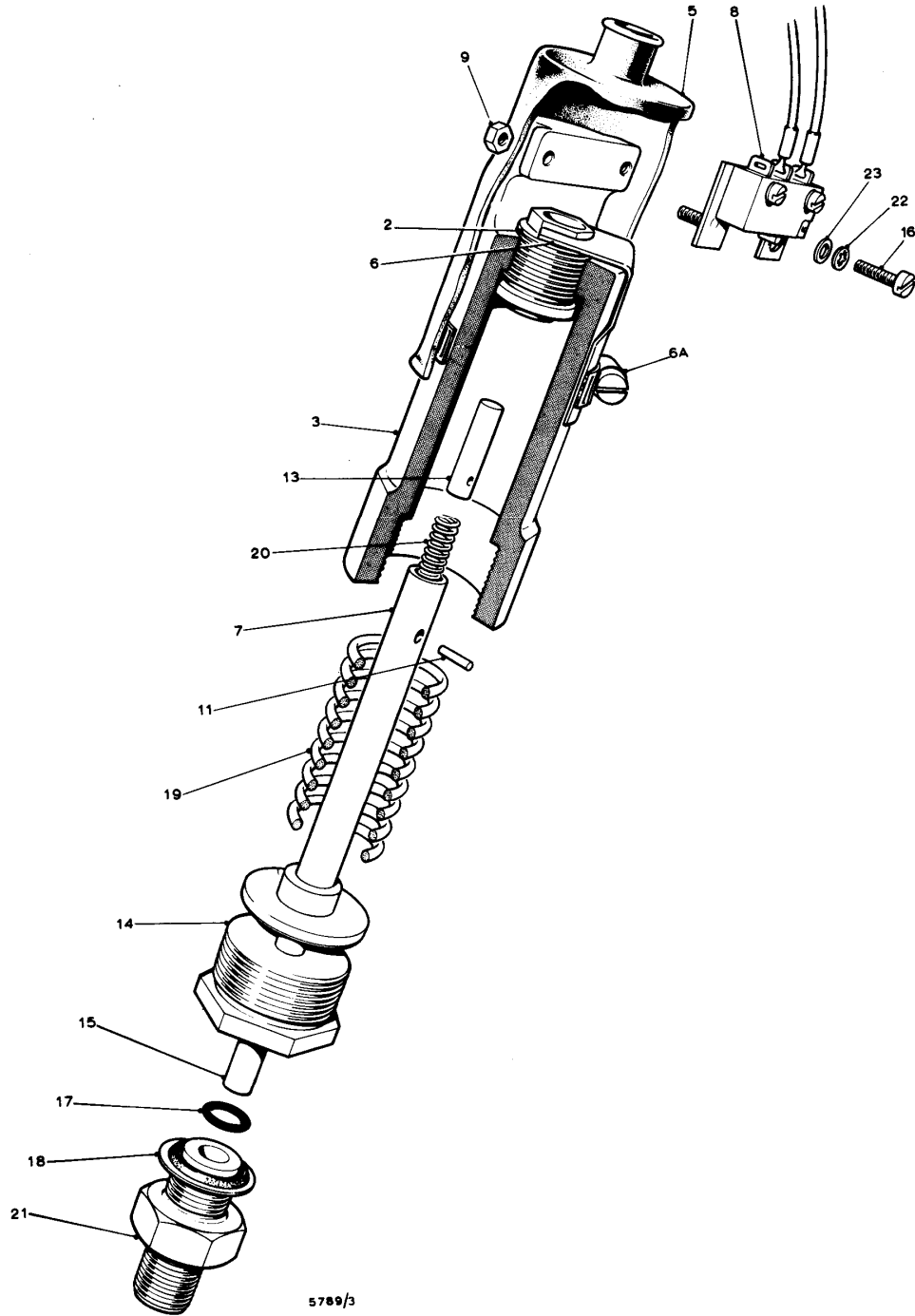
Fig No	Part No	Nomenclature 1 2 3 4 5 6 7	Usage code	Units per assembly RF
-1	552/1/02158/000	Solenoid valve assembly		
2	552/2/01857/000	*Abutment		2
3	552/2/02160/000	*Bracket, solenoid support		1
4	999/4/00648/024	*Circlip, trunnion pin retaining type 1000-93 zinc pl. "ANDERTON SPRINGS LTD"		1
5	999/4/00580/017	*Circlip, spring retaining type 1300-16 stl "ANDERTON SPRINGS LTD"		1
6	552/4/01924/000	*Diaphragm		1
7	552/2/01943/000	*Gimbal ring		1
8	552/2/02144/000	*Housing, valve		1
9	552/2/02145/000	*Mushroom		1
10	552/2/01951/000	*Pad, buffer		1
11	999/4/00001/002	*Pin, roll		4
12	552/2/01944/000	*Pin, trunnion		1
13	552/3/02163/000	*Push rod		1
14	552/4/01887/000	*Screw		2
15	552/4/01885/000	*Screw, spool valve		1
16	991/4/01609/062	*Screw, att. Housing		3
17	999/4/00493/004	*Screw, att. Solenoid		4
18	991/4/00006/002	*Seal, bonded (AGS1186-2)		1
19	999/4/01543/002	*Seal "O" ring		2
20	999/4/01543/003	*Seal, "O" ring		1
21	999/4/01543/004	*Seal, "O" ring		1
22	999/4/01543/012	*Seal, "O" ring		1
23	552/2/02157/000	*Solenoid top		1
24	552/2/02162/000	**Plunger		1



Fig No	Part No	Nomenclature	Usage code	Units per assembly
		1 2 3 4 5 6 7		
25	552/2/02156/000	*Solenoid bottom		1
26	552/2/02161/000	*Plunger		1
27	552/4/01856/000	*Spring		1
28	552/4/01947/000	*Trunnion		1
29	552/2/01855/000	*Valve, spool		1
30	991/4/01242/005	*Washer, spring 2BA		3
31	991/4/01242/004	*Washer, spring 4BA (SP47B)		4
32	991/4/00014/002	*Washer, plain		4
33	991/4/01349/025	*Washer, plain		2
34	991/4/00044/005	*Washer, plain 5/16in. (SP10G)		AR



Pressure Switch Assembly
(fig.4.6)





Pressure Switch Assembly (fig.4.6)

Fig No	Part No	Nomenclature 1 2 3 4 5 6 7	Usage code	Units per assembly RF
-1	552/1/02180/000	Pressure switch assembly MK2		
2	552/2/01972/000	*Adjusting screw		1
3	552/2/01970/000	*Body		1
-4	991/4/00244/085	*Bolt		2
5	552/2/01968/000	*Boot, rubber		1
6	558/2/03917/000	*Plate, locking		1
6A	991/4/01375/049	*Clip, hose BS3628 stl. cad. plated type 100S, 0.75in. – 1in. bore		
7	552/2/01828/000	*Housing, spring		1
8	552/4/02179/000	*Microswitch assembly		1
9	991/4/01202/001	*Nut, M3		1
-10	991/4/00448/004	*Nut, thin 8BA (BS57)		2
11	999/4/00464/002	*Pin, sel-lock 1/16 X ¼ “UNBRAKO LTD”		1
-12	552/4/02148/000	*Plate, microswitch		1
13	552/2/02146/000	*Plunger		1
14	552/2/02025/000	*Pommel		1
15	552/2/01975/000	*Roller bearing		1
16	991/4/01222/044	*Screw		1
17	552/2/01976/000	*Seal, “O” ring		1
18	991/4/00006/008	*Sealing washer, bonded (AGS1186- 6)		1
19	552/4/01826/000	*Spring, housing		1
20	552/4/01827/000	*Spring, plunger		1
21	552/2/02147/000	*Stud		1
22	999/4/00852/007	*Washer, crinkle 3mm int. teeth type 1205M “BARBER & COLEMAN LTD”		1
23	991/4/00044/002	*Washer, plain 4BA (SP10B)		1
-24	991/4/00412/014	*Washer, plain large 8BA BS3410 stl. cad. Plated		4

Motor Assembly (fig. 4.7)

-Items not illustrated



Fig No	Part No	Motor Assembly (fig. 4.7)					Usage code	Units per assembly
		1	2	3	4	5		
-1	552/4/01956/000	Motor assembly 24V (C26707) "NELCO LTD"					A-F	RF
-2	552/4/02165/000	Motor assembly 110V (C26756) "NELCO LTD"					G-M	RF
-3	B26714	*Armature assembly "NELCO LTD"					A-F	RF
-4	B26835	*Armature assembly "NELCO LTD"					G-M	RF
5	C26715	**Armature wound "NELCO LTD"					A-F	1
-6	C26836	**Armature wound "NELCO LTD"					G-M	1
7	112.2DOT FIT	**Bearing, ball drive end "HOFFMANN MFG. CO. LTD."						1
8	109P.2DOT FIT	**Bearing, ball comm. End "HOFFMANN MFG. CO. LTD."						1
9	1400-12M	**Circlip, external "ANDERTON SPRINGS"						1
10	B14398	*Bracket assembly, comm. End "NELCO LTD"					A-F	1
-11	B26384	*Bracket assembly, comm. End "NELCO LTD"					G-M	1
12	254920	**Bush spring "NELCO LTD"						2
13	C26718	*Bracket, drive end "NELCO LTD"					A-F	1
-14	C26808	*Bracket, drive end "NELCO LTD"					G-M	1
15	14667A	*Brush assembly, "NELCO LTD"					A-F	2
-16	A26094	*Brush assembly, "NELCO LTD"					G-M	2
17	14397	*Cap, bearing "NELCO LTD"						1
18	1300-32M	*Circlip, internal "ANDERTON SPRINGS LTD"						1
19	13906	*Cover, comm. "NELCO LTD"					A-F	1
-20	B26401	*Cover, comm. "NELCO LTD"					G-M	1
21	B26712	*Field coil assembly "NELCO LTD"					A-F	1



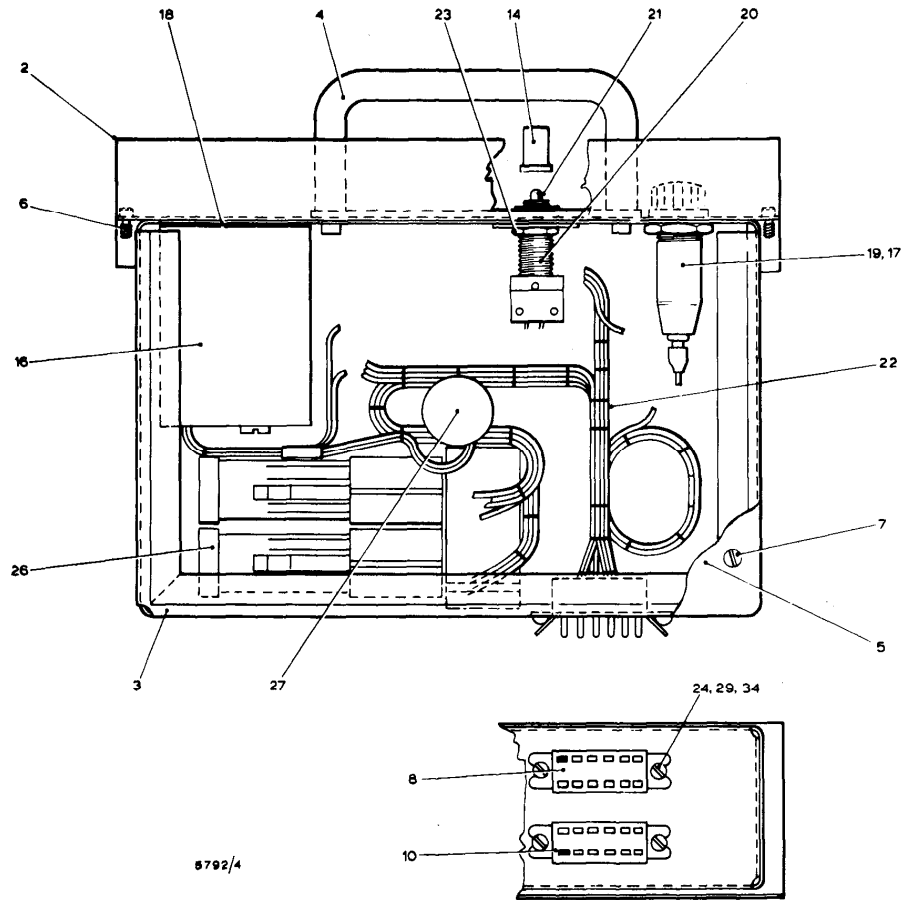
Power Supplies (UK) Ltd

Service Manual for the TELECRIMP® Mark 3 / 4

Fig No	Part No	Nomenclature							Usage code	Units per assembly
		1	2	3	4	5	6	7		
-22	B26407	*Field coil assembly "NELCO LTD"							G-M	1
23	14671	*Insulation, comm. "NELCO LTD"							A-F	1
24	13907	*Pin, cover "NELCO LTD"								1
25	SLS2	*Terminal block assembly "KLIPPON ELECTRICALS LTD"								1
26	SE70	*Seal, oil "GEO. ANGUS & CO. LTD."								1
27	15094	*Shim, pre-loading "NELCO LTD"								3AR
28	15093	*Spring, bearing pre-load "NELCO LTD"								1
29	14395	*Stay "NELCO LTD"								1
30	M5	*Nut "NELCO LTD"								2
31	T162S	*Nut "NELCO LTD"							A-F	2
-32	T158S	*Nut "NELCO LTD"							G-M	2
33	D216B	*Screw, 4BA "NELCO LTD"								1
34	D208S	*Screw, 4BA "NELCO LTD"								2
35	E206B	*Screw, 2BA "NELCO LTD"								2
36	A26849	*Stud, "NELCO LTD"								2
37	DP1004	*Washer, crinkle 2BA "T. HADDON & STOKES LTD"								4
38	DP1003	*Washer, crinkle 4BA "T. HADDON & STOKES LTD"							A-F	3
-39	DP1003	*Washer, crinkle 4BA "T. HADDON & STOKES LTD"							G-M	2
-40	U656R	*Washer, spring 4BA "NELCO LTD"							G-M	1



Control Box Assembly
(fig. 4.8)



8792/4



Control Box Assembly (fig. 4.8)				
Fig No	Part No	Nomenclature	Usage code	Units per assembly RF
-1	558/1/04107/000	Control box assembly, MK.3		
2	558/1/04116/000	*Box, control sub-assembly		1
3		**Case		1
4	999/4/01955/015	**Handle "HAM & HAF LTD" type HAF350 stl. polished chrome		1
5		**Lid		1
6	999/4/00053/001	**Screw, skt. hd. cap. ¼ x 3/8 in. stl. "UNBRAKO LTD"		2
7	999/4/00829/001	**Screw, self tapping csk. Hd. no. 4 x ¼ in. "GKN SCREWS & FASTENERS LTD"		6
8	558/1/04133/000	*Cableform, plug		1
-9	74/10/1106/10	**Plug, 11 way "PAINTON LTD" series 159		1
10	558/1/04132/000	*Cableform, socket		1
-11	558/4/04135/000	**Resistor, 2K2 OHMS		1
-12	74/10/1156/10	**Socket, 11 way "PAINTON LTD" series 159		1
-13	705/4/07570/000	*Cap, lens plastic		1
14	705/4/07576/000	*Cap, lens red type 80-010-765 "LICON ELECTRONICS LTD"		1
-15	705/4/07587/000	*Connector, in line type 34070 "AIRCRAFT MARINE PRODUCTS LTD"		2
16	705/4/07569/000	*Counter, 6 digit 24V type 4426-152-801 "ENGLISH NUMBERING MACHINES"		1
17	705/4/07572/000	*Fuse, 5 amp type L1055-5A "BELLING-LEE LTD"		1
18	705/2/07597/000	*Gasket, sealing		1
19	705/4/07571/000	*Holder, fuse type L1382 "BELLING-LEE LTD"		1



Fig No	Part No	Nomenclature 1 2 3 4 5 6 7	Usage code	Units per assembly
20	705/4/07575/000	*Indicator, type 01-74500 "LICON ELECTRONICS LTD"		1
21	705/4/07578/000	*Lamp, filament 28V type L1199 "LICON ELECTRONICS LTD"		1
-22	558/1/04131/000	*Link set		1
23	558/2/04163/000	*Nut, lamp bezel		1
24	991/4/00449/003	*Nut, ord. 6BA BS57 stl. cd. Pl. & pass		4
-25	991/4/00449/008	*Nut, thin 4BA BS57 stl. cd. Pl. & pass		2
26	558/1/04136/000	*Relay assembly, mounting		1
27	705/4/07581/000	*Resistor, non-linear		1
-28	991/4/00261/035	*Screw, csk. Hd. 4BA X 3/8 in. LG. BS57 stl. cad. plate & passivated		2
29	991/4/00252/059	*Screw, Rd. Hd. 6BA X 3/8 in. LG. BS57 stl. cad. plate & passivated		4
-30	999/4/01515/016	*Screw, self tapping pan hd posidrive no.6 X 1/4 in. stl. cad. plated "GKN SCREWS & FASTENERS LTD"		4
-31	2006115575	*Seal "O" ring "DOWTY SEALS LTD"		1
-32	508/2/00788/000	*Washer, sealing		1
-33	999/4/00852/012	*Washer, shake proof type 12, 4BA int. teeth "BARBER & COLEMAN"		2
34	999/4/00852/006	*Washer, shake proof type 12, 6BA int. teeth "BARBER & COLEMAN"		8